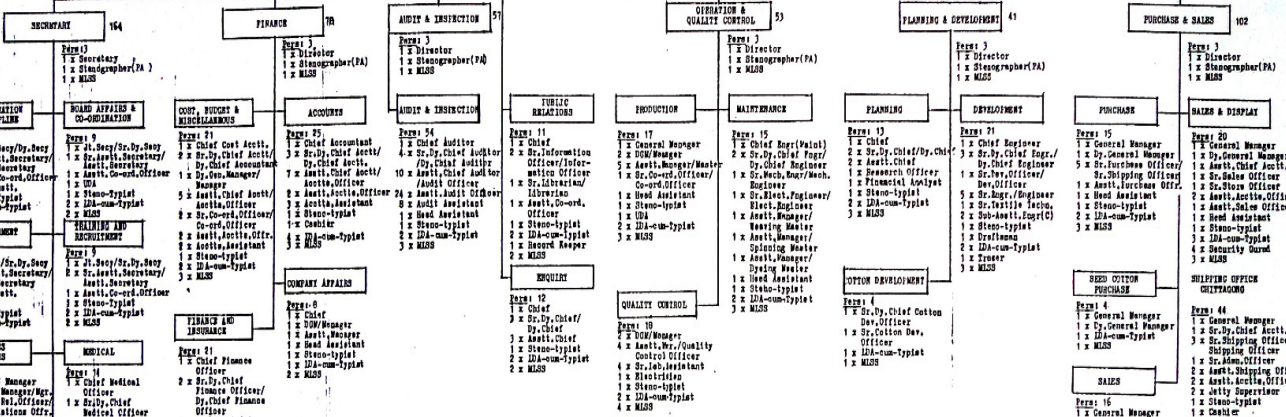


सां गठनिक काठामो

ORGANIZATION

CHAIRMAN 523

Page 1 5
 1 x Chairman
 1 x Sr. Co-ordinating Officer
 1 x Stenographer (PA)
 2 x MISS



SUMMARY OF MANPOWER

Sl. No.	Name of the Post	Sanctioned	Existing	Overhead	Sl. No.	Name of the Post	Sanctioned	Existing	Overhead
1.	Chairman	1	1	1	51.	Librarian/ Librarian	1	1	1
2.	Director	6	4	5	52.	Asst. Chief, Registry Cell	3	3	3
3.	Secretary	1	1	1	53.	Asst. Chief, Planning	5	5	4
4.	Chief Medical Officer	1	1	1	54.	Engineer/Eng(Civil)(Gen)	1	1	1
5.	Chief, Public Relation	1	1	1	55.	Engineer/Eng(Mech)(Gen)	5	7	5
6.	Chief, Planning	1	1	1	56.	Engineer/Eng(Elect)(Gen)	1	1	1
7.	Chief, Registry Cell	1	1	1	57.	Engineer/Eng(Mech)(Gen)	1	1	1
8.	Chief, Inspection	1	1	1	58.	Textile Technologist(Dr)	1	1	1
9.	General Manager (Purchase)	1	1	1	59.	Chief Dev/Contn Dev-Logistics Officer	1	1	1
10.	General Manager (Head Cotton)	1	1	1	60.	Sr. Purchase/Purchase Officer (Purchase)	1	1	1
11.	Gen. Manager, Shipping Office	1	1	1	61.	Sr. Shipping/Shipping Officer (Purchase)	4	4	4
12.	General Manager (Sales)	1	1	1	62.	Sr. Shipping/Shipping Officer (Shipping Office)	1	1	1
13.	General Manager (A & D)	1	1	1	63.	Sr. Asst. Manager/Civil (Shipping Office)	3	2	3
14.	Chief Auditor	1	1	1	64.	Asst. Manager/Civil (Shipping Office)	1	1	1
15.	General Manager (Production)	1	1	1	65.	Sr. Asst. Manager/Officer (Genl)	1	1	1
16.	Chief Engineer (Mech)	1	1	1	66.	Sr. Sales/Sales Officer (S & D)	3	3	3
17.	Chief Accountant	1	1	1	67.	Asst. Account Officer (S & D)	1	1	1
18.	Chief Cost Accountant	1	1	1	68.	Store/Store Officer (S&D)	1	1	1
19.	Chief, Company Affairs	1	1	1	69.	Asst. Manager/Mech (Prod)	5	6	5
20.	Chief Finance Officer	1	1	1	70.	Asst. Auditor/Audit Officer/Audit Officer (Cost & Budget)	10	12	10
21.	General Manager (RD)	1	1	1	71.	Asst. Manager/Mech (Prod)	5	6	5
22.	Sr. Dy. Chief Medical Officer	1	1	1	72.	Sr. Manager/Engineer (Mech-Mach)	1	1	1
23.	Sr. Dy. Chief, Registry Cell	3	3	3	73.	Sr. Engineer/Engineer (Elect-Mech)	1	1	1
24.	Sr. Dy. Chief, Chief, Planning	2	2	2	74.	Asst. Manager/Spinning Master (Main)	1	1	1
25.	Sr. Dy. Chief/Dy. Chief, Registry Cell	3	3	3	75.	Asst. Manager/Spinning Master (Main)	1	1	1
26.	Sr. Development Officer	1	1	1	76.	Asst. Manager/Dyeing Master (Main)	1	1	1
27.	Sr. Dy. Chief/Dy. Chief Cotton Development Officer	1	1	1	77.	Asst. Manager (C.I./C.O.C.)	4	2	4
28.	Sr. General Manager (Purchase)	1	1	1	78.	Asst. Chief Asstt/Accounts Officer (Account)	7	9	7
29.	General Manager/Manager (Head Cotton Purchase)	1	1	1	79.	Asst. Chief Asstt/Accnt Officer (Cost & Budget)	5	2	5
30.	Sr. Dy. Chief Accountant/DCI (Shipping Office)	1	1	1	80.	Sr. Coordination Officer C.O. MIB	2	2	2
31.	DCI / Manager (Sales)	2	1	2	81.	Asst. Manager, Company Affairs	1	1	1
32.	DCI/Manager (Sales & Display)	1	1	1	82.	Asst. Chief Finance Officer/Finance Officer	3	4	3
33.	Sr. Dy. Chief Auditor	4	2	4	83.	Asst. Chief Insurance Officer/Insurance Officer	2	1	2
34.	DCI/Manager (Production)	2	1	2	84.	Sr. Asstt. Secy./Asstt. Secy.	8	7	7
35.	Sr. Dy. Chief/Dy. Chief Regr/Asstt. Officer (Account)	3	3	3	85.	Sr. Security Officer	1	1	1
36.	Sr. Dy. Chief/Dy. Chief Asstt. Accountant (Cost & Budget)	3	5	3	86.	Sr. RMO/RMO	1	1	1
37.	Sr. Dy. Chief/Dy. Chief Finance Officer	2	2	2	87.	Sr. C.O./Sr. E.O./Sr. O.D.O.	8	3	5
38.	DCI/Manager, M.I.S.	1	1	1					
39.	DCI/Manager, Company Affairs	1	1	1					
40.	Sr. Dy. Chief/Dy. Chief Insurance Officer	1	1	1					
41.	Sr. Dy. Chief/Dy. Chief	2	2	2					
42.	Sr. Dy. Chief/Dy. Chief Insurance Officer	1	1	1					
43.	Sr. Dy. Secy./Sr. Dy. Secy. (Mech)	1	1	1					
44.	Sr. Dy. Secy./Sr. Dy. Secy. (Gen)	1	1	1					
45.	Sr. Dy. Secy./Sr. Dy. Secy. (Mech)	1	1	1					
46.	Sr. Dy. Secy./Sr. Dy. Secy. (I & S)	1	1	1					
47.	Sr. Dy. Secy./Sr. Dy. Secy. (Gen)	1	1	1					
48.	DCI/Manager/Employee Relation	1	1	1					
49.	Law Officer	1	1	1					
50.	Asstt. Chief Medical Officer	1	2	1					
51.	Sr. Inform. Officer/Information Officer	2	1	2					

AUTOMATION OF TRANSPORT, WAGON OFFICE EQUIPMENT AND OTHER MISCELLANEOUS POINTS

1. Transport
 - a. 8 x Car
 - b. 10 x Microbus
 - c. 4 x Bus
 - d. 1 x Motor Cycle for Despatch Rider duty.
2. Private use of transport on payment will be strictly as per latest instructions issued by the Government.
3. Air-Conditions/Cooler
 - a. 6 x Air-Conditions/Cooler for the use in the Conference Room and the office of the Chairman.
4. Office Equipment
 - a. 1 x Photo Layer Copier
 - b. 2 x Duplicating Machine
 - c. 1 x Paper Machine
 - d. 65 x Typewriter
5. Other Miscellaneous Points: The existing designation of the Sr. Dy. Secretary is re-designated as Joint Secretary in the same scale of pay.
6. The Board of Directors of the Corporation will examine the staffing position and 4 workers of the enterprise under its administrative control and approved manpower as and when required.

REVISION (UPON THE BOARD)
 CHAIRMAN, NATIONAL GAS CORPORATION
 IS ORGANIZATIONAL SET-UP OF
 PUBLIC TRANSPORT CORPORATION, INC.
 30.1.84